

3100 SERIES (Press-Fit Type)

FEATURE

Insulator Material : PBT UL94V-0
 Contact Material : Phosphor Bronze
 Plating : Selective Gold Plating Over Nickel On Contact Point
 100μ" Tin Plating On Tail Section
 50μ" Nickel Underplating

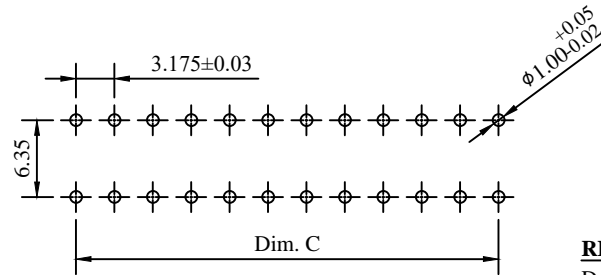
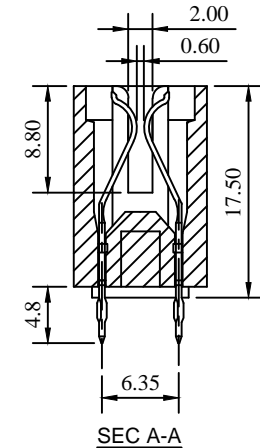
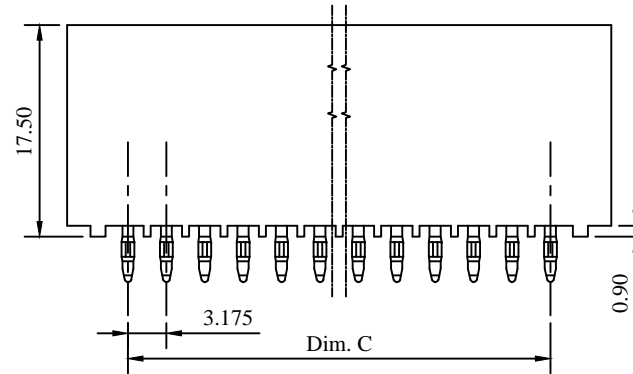
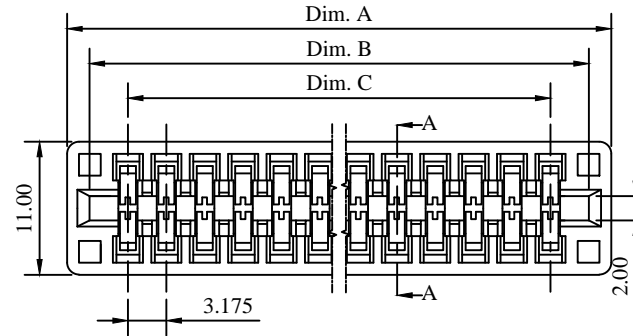
SPECIFICATION

Current Rating : 3 Ampere
 Contact Resistance : 20 milliohms maximum
 Insulation Resistance : 5000 megohms minimum
 Voltage Rating : 800 VAC 1 minute
 Operation Temperature Range : -55°C to +105°C
 Insertion Force : 412 grams max. per pair
 Withdrawal Force : 32 grams min. per pair

ORDERING INFORMATION

3100 - □□□ - C - □ - N - □

No. of Contacts □ **Other Custom Options**
Tail Length (T) □ **Mounting Ear**
 C : 4.80 mm N : No Mounting Ear
Plating Code □ W : With Mounting Ear



RECOMMENDED PCB LAYOUT

RECOMMENDED PCE HOLE

Drill Hole Diameter : 1.15^{+0.00}/_{-0.03} mm
 Plating : 0.025 To 0.075 mm Copper
 Tin/Lead Plating
 Finished Hole Diameter : 1.00^{+0.05}/_{-0.02} mm

No. of Contacts	Dimensions (Dim.)				
	A	B	C	D	E
15/30	68.08	61.47	54.52	50.81	44.45
18/36	77.60	70.99	64.04	60.33	53.97
20/40	83.95	77.34	70.39	66.68	60.32
22/44	90.30	83.69	76.74	73.03	66.67
28/56	109.35	102.74	95.79	92.08	85.72
30/60	115.70	109.09	102.14	98.43	92.07
36/72	134.75	128.14	121.19	117.48	111.12
40/80	147.45	140.84	133.89	130.18	123.82
43/86	156.97	150.36	143.41	139.71	133.35
50/100	179.20	172.59	165.64	161.93	155.57

Plating Code	
1	10μ"
2	G/F
3	3μ"
4	5μ"
5	G/F Overall
6	30μ"
7	Tin Overall
8	15μ"
9	20μ"

Title : Customer Drawing		Type : Edgecard Connector		彩電企業股份有限公司 CHARTRON INCORPORATION			
Part No. : 3100 Series							
Description :				Tolerances Unless Otherwise Specified : X. ± 0.50 .X ± 0.38 .XX ± 0.25 X.° ± .X° ± .XX° ±			
Pitch 3.175 mm Edge Card Connector Press-Fit Type							
Row To Row 6.35 mm				DWG No. : 010 - 0000 - 531			
Without Mounting Ear				Date : 01 - Feb. - 2018			
APPD. : James C.		CHK. : Connie Z.		DRW. : Bryant C.		Dim. Scale Sheet Rev. mm N/A 1 of 1 A	